

DISCOVER ONE OF THE WORLD'S
MOST EXCITING AND VIBRANT CITIES







CONTENTS

Welcome	5
Accommodation	6
Restaurants and Bars	10
Conference and Meeting Facilities	12
Wedding and Special Occasions	13
Recreation and Leisure	14
Anantara Spa	15
Surrounding Area	16
Tips For Travellers	19





WELCOME TO THE URBAN HAVEN OF ANANTARA SATHORN BANGKOK HOTEL

Lose yourself in Thailand's capital city and indulge the sights, sounds and cultural delights of this iconic urban metropolis. Situated in Bangkok's prestigious business district, Anantara Bangkok Sathorn Hotel is just moments away from high end shopping, unique cafes, up market restaurants and a vibrant nightlife scene. At Anantara Bangkok Sathorn Hotel, guests can expect premium facilities and impeccable service, as well as an inspiring array of culinary delights and exceptional beverages in one of the hotels many restaurants and bars. Room service is also available any time of the day or night.

ACCOMMODATION

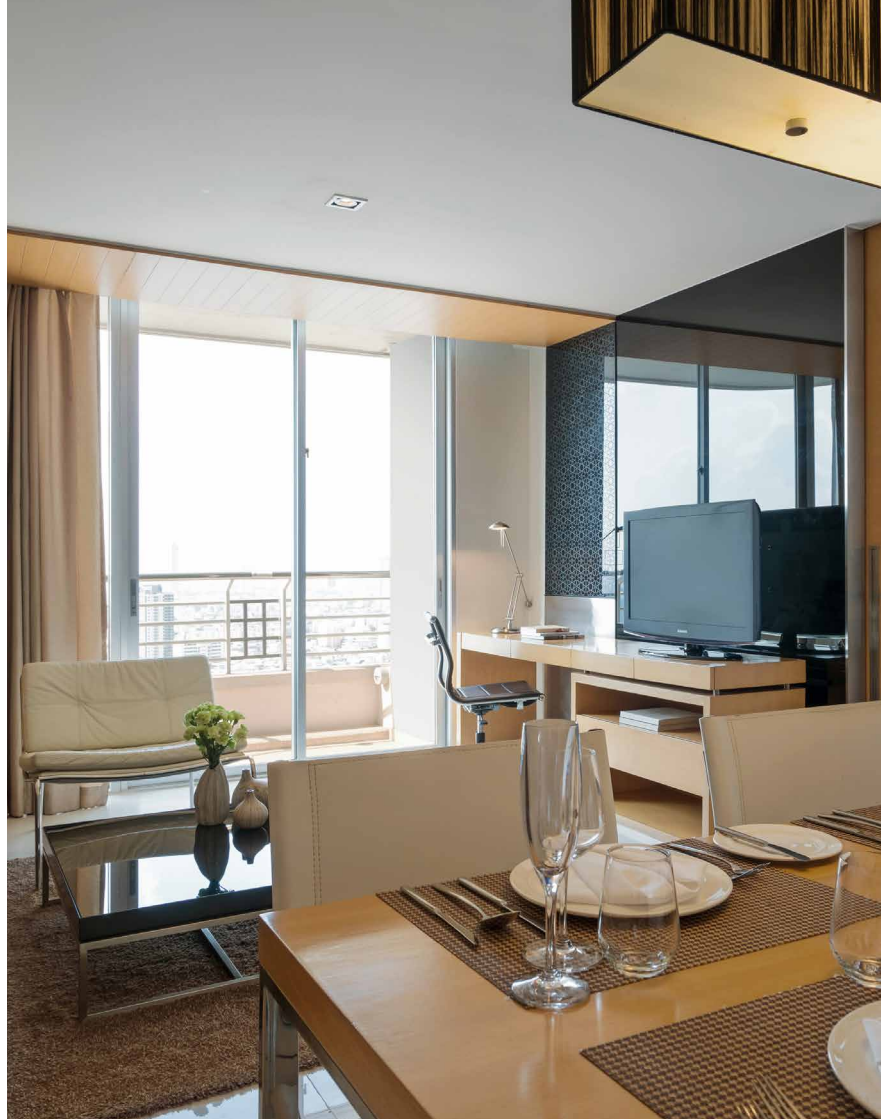
Delight in panoramic views of downtown Bangkok and the famous Chao Phraya River through the floor to ceiling windows of your home away from home. Indulge the luxurious facilities of our five star resort or venture into the city and enjoy a truly authentic Thai experience.

PREMIER ROOM

Awaken to Eastern luxury in one of our 39 square metre Premier Rooms. With first rate amenities and contemporary design throughout, each of these impressive rooms enjoys a private balcony. Bathrooms are equipped with a rain shower, adjoining the stylish bedroom which features an extensive wardrobe as well as space for storing luggage. A choice of king size bed or twin singles promises outstanding sleep.

SKYLINE PREMIER ROOM

Located between the 14th – 31st floors, Skyline Premier Rooms offer stunning views of Bangkok's urban skyline from the private balcony or through floor to ceiling windows. To complement the unbeatable views, these comfortable 39 square metre rooms offer stylish, modern amenities and a luxury bathroom with rain shower. The spacious bedroom comes with a choice of king size bed or twin singles as well as generous wardrobe and storage space.





ONE BEDROOM SUITE

Experience stylish, urban luxury in one of our spacious One Bedroom Suites. Each suite comes with an elegant living and dining area, furnished with seating for four and a dedicated work station. Relax in your modern bedroom and select between king or twin single beds in the bedroom. Luxuriate under the rain shower or relax in the separate tub, ideal for unwinding at the end of a long day before witnessing the day turning to dusk from your personal balcony.

SKYLINE ONE BEDROOM SUITE

Soak in the spectacular city views from your private balcony from a lofty position between the 14th – 31st floor. Skyline One Bedroom Suite's offer 64 square metres of comfortable space, dedicated work area and luxurious living room and dining area for four. The generously appointed bedroom features your choice of king size or twin single beds whilst the exquisite bathroom is equipped with a bathtub and separate rain shower.

TWO BEDROOM SUITE

With 121 square metres of designer space, our Two Bedroom Suites are the perfect choice for an exotic city break with friends or family. Stretch out in your spacious living room or enjoy panoramic vistas from your personal balcony. The master bedroom enjoys an en-suite bathroom with rain shower and separate bathtub while the second bedroom features twin beds and a private bathroom. Relax on your comfortable sofa or sip morning coffee at your desk as your work through the day's emails.

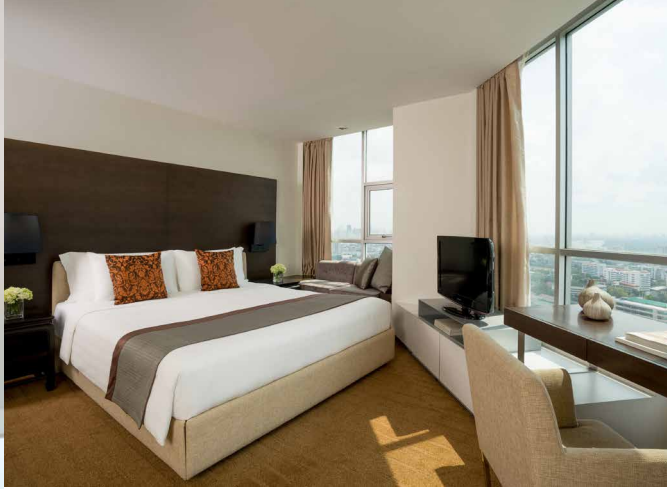
SKYLINE TWO BEDROOM SUITE

Enjoy unbeatable panoramic views of the Bangkok city skyline from your personal balcony between the 14th – 31st floors. Boasting 121 square metres of space, this suite features stylish furnishings and comfortable dining for four. The master bedroom contains a lavish king sized bed dressed in luxury linens and the room adjoins a lavish en-suite bathroom with bathtub and separate rain shower. The second room is equally luxurious with twin single beds and its own private bathroom.

KASARA PREMIER ROOM

Experience 39 square metres of luxurious space in contemporary designer style with the most elevated views the hotel has to offer. Enjoy these dazzling heights through floor to ceiling windows or from your own private balcony. The spacious, modern bedroom comes with a choice of king size bed or twin singles, dressed in quality linens. After a soothing rain shower in your lavish en-suite bathroom, relax on the sofa or get productive at your work desk.





KASARA ONE BEDROOM SUITE

Unfolding over 64 square metres of designer space, floor to ceiling windows invite natural light and the heightened skyline panorama makes for perfect sunset viewing. Select between king size or twin single beds in the stunning bedroom. Sliding doors connect to the luxurious bathroom which features a rain shower and separate bath tub for unspoiled relaxation. Ideal for hosting guests – the dining area seats four and the living room includes comfortable sofa and work desk.

KASARA TWO BEDROOM SUITE

Cherish special moments in the Kasara Two Bedroom Suite and enjoy the most impressive views of Bangkok that the hotel has to offer. Featuring a dedicated lounge with working area and separate dining area for four, the suite unravels over 121 square metres of luxury space. The master bedroom features includes a king size bed, private balcony and ensuite with private tuba and rain shower. The second bedroom comes with twin beds and also features a bathroom.

RESTAURANTS AND BARS

100° EAST

Embark upon a culinary journey like no other at 100° East. With a lavish array of expertly prepared Asian and Western dishes there's a flavour to please ever pallet from signature Thai curries to imported steaks. Feast in style surrounded by hardwood furnishings and sensuous textiles, or dine alfresco on the adjoining pool deck.

ZIN BAR

The ideal spot for a quick fix breakfast or brief daytime meeting, Zin Bar, located in the lobby, is the perfect spot for guests with busy, work schedules. The space boasts striking design features which create a contemporary atmosphere. By night, Zin Bar transforms into a social venue where guests can chat and unwind with an array of delicious bar meals and mouth-watering cocktails.

CRUST

Delight in some the best pizzas that Bangkok has to offer, fresh from a stone-fire pizza oven. With a tempting range of favourites as well as the option to choose your own toppings at the pizza bar, you'll be more than satisfied with what our expert chefs conjure up for your culinary pleasure. Our pizzas can be enjoyed either at the bar, in 100° East, out on the pool deck, or in the privacy of your room.

KASARA EXECUTIVE LOUNGE

Experience a host of exclusive privileges in a quiet, stylish environment with spectacular city views. Enjoy a complimentary breakfast buffet, soft drinks and snacks all day, followed by sunset canapés and drinks on the balcony. Stay connected with local and international newspapers on iPad tablets. Take advantage of a Chief Concierge as your personal assistant.





ZOOM SKY BAR & RESTAURANT

Meet, dine and enjoy sensational drinks at ZOOM Sky Bar & Restaurant. This chicly designed venue presents an intimate evening experience with 360° cityscape views. Using the highest quality ingredients, ZOOM serves exciting Gastronomic Cuisine plus some Asian Delights. This dining journey is matched with an extensive beverage menu which includes classic cocktails, cool beers, fine wines and imaginative non-alcoholic creations.

ZOOM SKY LOUNGE

Discover a chic urban den, just steps away from the rooftop. Gather at the city view bar for wines by the glass or molecular, retro twist, martini and jazz inspired cocktails. Cosy into booths for innovative tapas with tableside finishes. Listen to live jazz three nights a week. Drink in sunset with Cuban cigars on the terrace overlooking the Chao Phraya River.



DINING BY DESIGN

Embark upon a unique and tailored culinary experience, made just for you. Anantara's signature Dining by Design allows for you to choose from Thai and western fine dining menus, prepared by your personal chef. Enjoy a romantic evening with a spectacular 360°panorama of Bangkok's skyline from our chicly designed ZOOM Sky Bar & Restaurant. For a truly flawless experience, tables are specially decorated and impeccable Anantara service can be expected as standard.



CONFERENCE AND MEETING FACILITIES

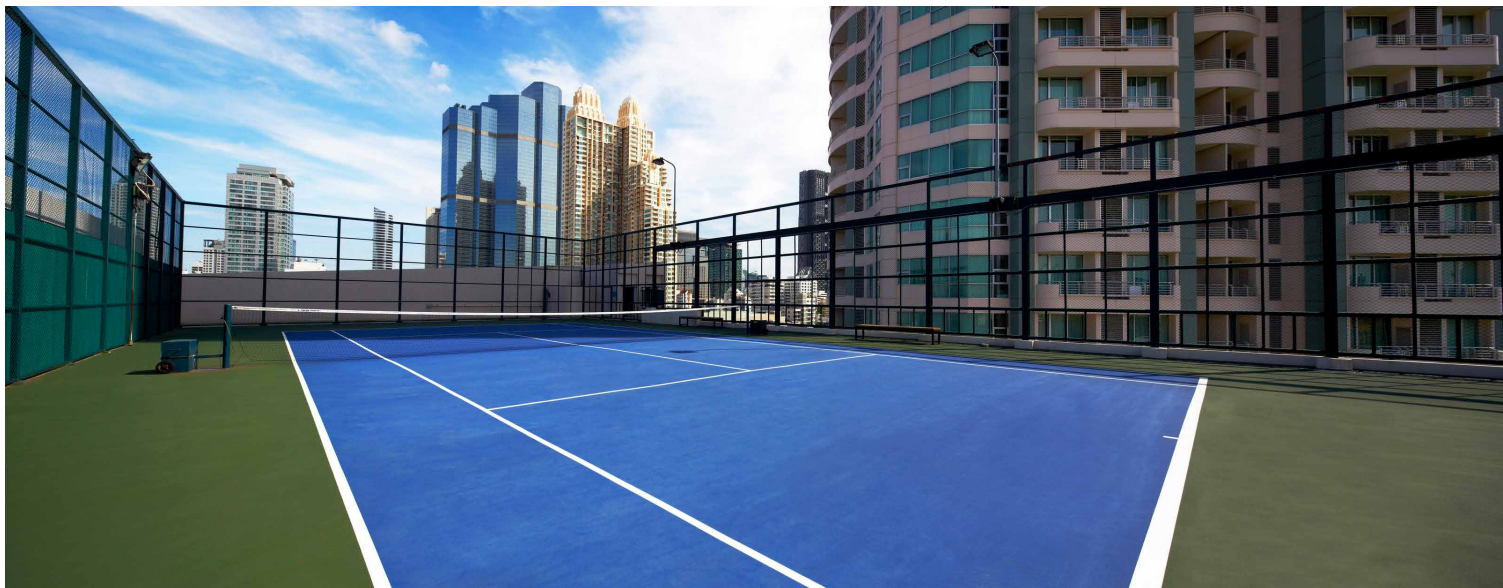
For seamless meetings, powerful conferences and unforgettable private functions, Anantara Sathorn Bangkok Hotel is the ideal venue for hosting your private event. With a choice of 9 impressive meeting rooms, each complete with all of the necessary, modern facilities, such as audio-visual and video-conferencing equipment, an event at Anantara Sathorn Bangkok Hotel will make for a memorable occasion. Dedicated business event planners are also on hand for your assistance as and when required.



WEDDINGS AND SPECIAL OCCASIONS

Transform your dream of the perfect wedding into a breath-taking ceremony at Anantara Sathorn Bangkok Hotel. Convey your expressions of romance and togetherness to our professional wedding planners who will work tirelessly to create an occasion that will stay with you always. Placing your trust in the capable hands of our esteemed Anantara team will mean that your special day is given the utmost attention it deserves, with the facilities to cater flawlessly for hundreds of people.

We can transform your special day into an extravagant celebration, or an intimate affair that will be remembered for its elegance and exclusivity. Toast your union with a delightful cocktail reception and then savour a gourmet meal, expertly crafted for small gatherings, or feast on a sensational international buffet if your wedding is a grander occasion. Collaborate with our experienced team for the perfect décor and spectacular entertainment.



RECREATION AND LEISURE

Cherish a day of indulgent relaxation or experience something more invigorating at Anantara Sathorn Bangkok Hotel. Keep up your exercise regime in our well-equipped fitness centre, open 24 hours a day, or energise with laps in the 32 metre long infinity edge swimming pool. After a refreshing dip, relax on the loungers of our inviting sundeck. To get your blood pumping, challenge a companion to a friendly match in our tennis court and then conclude the day at Anantara Spa for a rejuvenating sauna session and pampering wellness.



ANANTARA SPA

Retreat from the city's hustle and bustle to indulge in luxurious pampering at our tranquil urban spa sanctuary. Designed in contemporary Asian style, with a focus on your supreme wellbeing, Anantara Spa journeys invite you to deeply relax and feel fully rejuvenated, with an extensive spa menu inspired by ancient wellness rituals from across Thailand and Asia, as well as the most advanced western techniques.

SIGNATURE TREATMENTS

Journey of Siam (135 Minutes)

Rediscover your inner strength and vigour with this exquisite journey from Thailand. A relaxing steam bath, combined with a scrub of your choice leaves skin smooth, supple and hydrated. Enhance your energy flow, remove sluggishness, soothe muscle tension and ease out stiffness with the application of warm herbal poultice containing therapeutic Thai herbs and spices, and a full body massage with carefully selected herbal oils.

Anantara Signature Massage (90 Minutes)

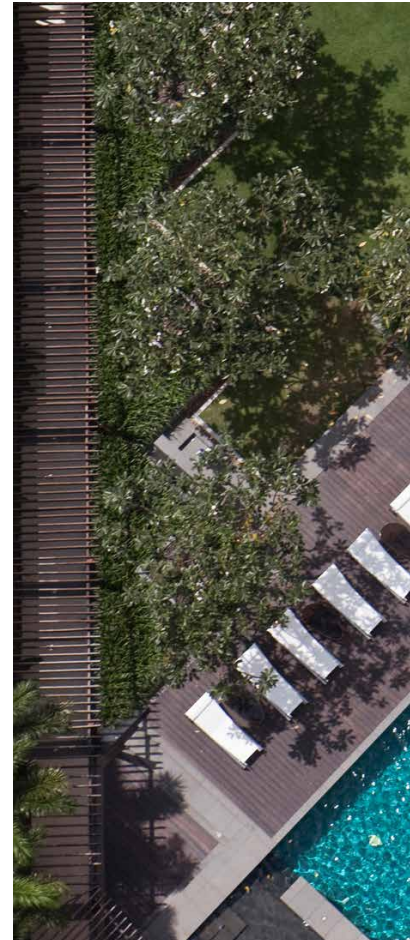
Combining revered eastern and western techniques in purpose designed movements with our signature oil blend, this massage stimulates the circulation and deeply relaxes muscles. Meanwhile, reflexology clears blockages of energy and promotes overall wellbeing.

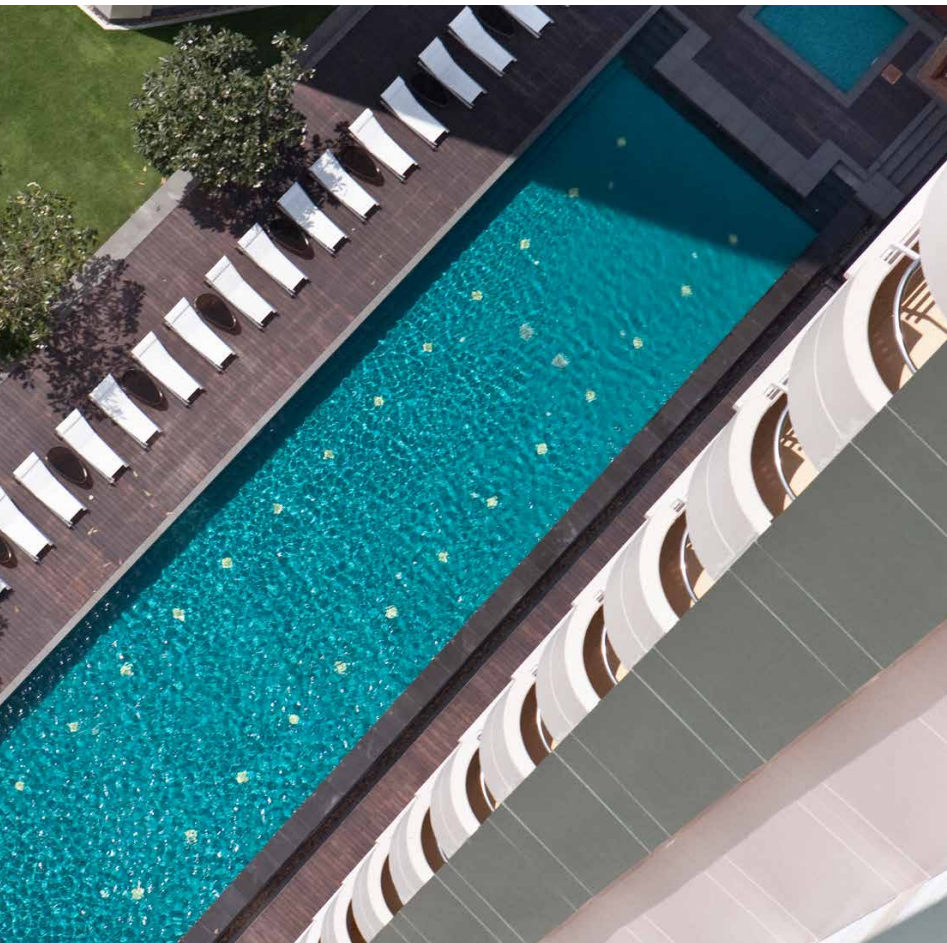


SURROUNDING AREA

Spend the day exploring this captivating and vibrant capital city and enjoy some of the exotic curiosities that Thailand has to offer. Wander the grounds of Bangkok's spectacular Grand Palace, experience humbling serenity at one of the city's golden Buddhist temples or lose yourself in the organised chaos of one of Bangkok's iconic markets, by day or by night.

- The Grand Palace and Wat Phra Kaeo
- Wat Pho
- Wat Arun (Temple of Dawn)
- The National Museum
- The National Gallery Museum
- Jim Thompson House
- Phra Thi Nang Vimanmek and Abhisek Dusit Throne Hall
- Chatuchak Weekend Market
- Asiatique night market





WEATHER

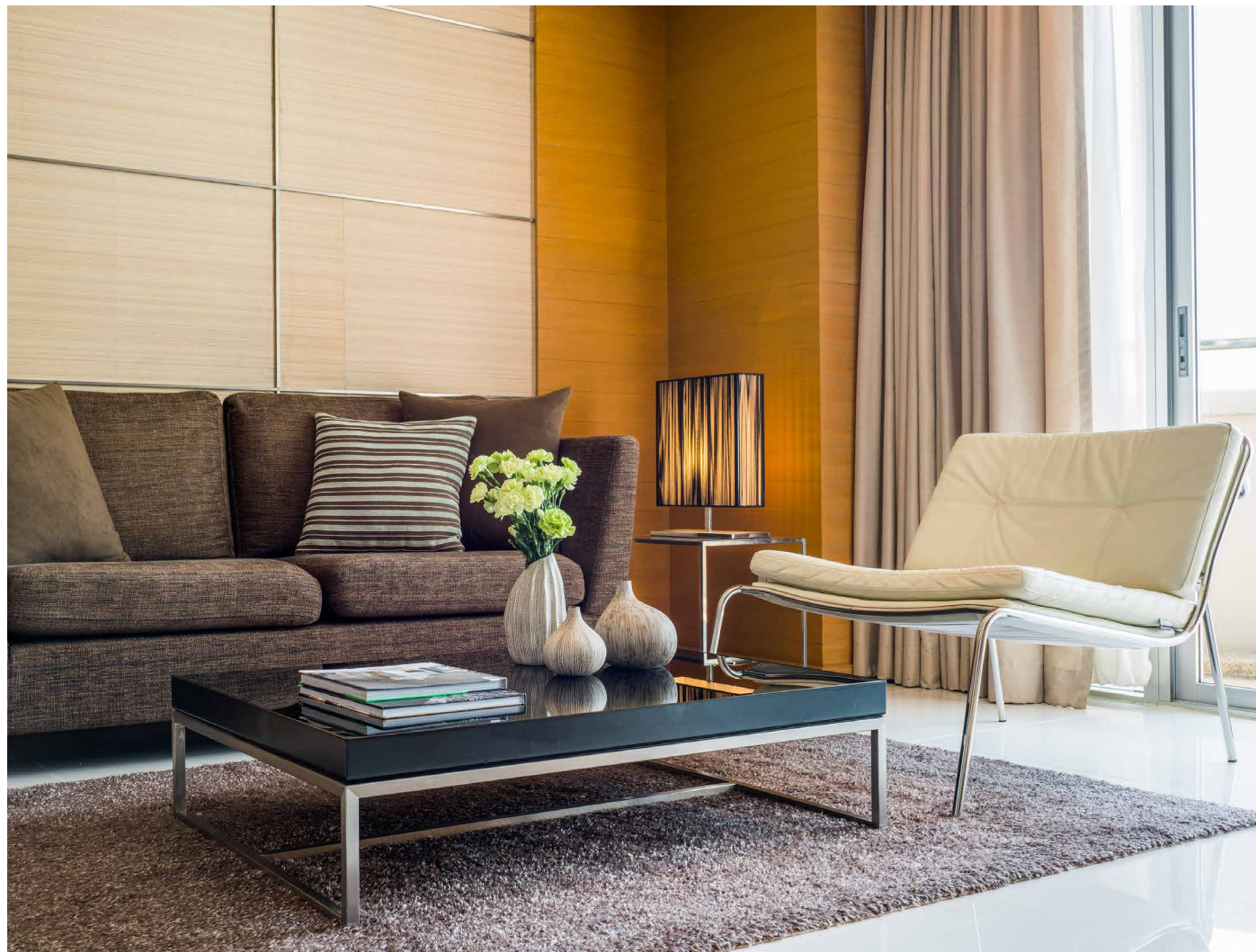
With a warm, tropical climate, Thailand enjoys temperatures ranging from 23°C in dry season (November to February) to 35°C in hot season (March to May). Heavy monsoons can be expected from June to October, however showers are brief and the majority of the day is dry and warm. Natural fibres and breathable fabrics are recommended in this climate.

ARRIVAL

Anantara Sathorn Bangkok Hotel is roughly 45 minutes from Suvarnabhumi International Airport (BKK). Public taxis are also available from the pick-up counters. Public transportation from the airport is available by connecting to the BTS SkyTrain from the Airport Rail Link.

LOCATION

Anantara Sathorn Bangkok Hotel's location is ideally placed in Bangkok's business district close to Sathorn and Silom roads and near to plenty of great shops and restaurants. A free shuttle transfer is available from the hotel to the closest BTS SkyTrain system, giving you easy access to the rest of the city.



TIPS FOR TRAVELLERS

All visitors receive a 30-day permit to enter Thailand on arrival at the airport and thus there is no requirement to apply for a visa prior to entering the country.

Learning a few common phrases in Thai is sure to be well received by the locals as well as making your experience of this country flow a little more smoothly.

If you take an electronic device that does not accept 220 - 240 volts; 50Hz, then you might require a voltage converter.
Please dress modestly when visiting religious sites such as Buddhist temples and the Grand Palace. Cover chest, shoulders and legs to the knees as a mark of respect for the local culture.



Anantara Sathorn Bangkok Hotel
36 Narathiwat-Ratchanakarin Road, Yannawa, Sathorn, Bangkok 10120 Thailand
T +66 (0) 2210 9000 F +66 (0) 2210 9001 E bangkoksathorn@anantara.com
anantara.com